

****Please note – this report must be read in conjunction with the Northern Ireland Water Framework Directive Summary Report of the characterisation and impact analyses required by Article 5****
(<http://www.ehsni.gov.uk/pubs/publications/article5report.pdf>)

River and Lake Small Water Body Identification**1. Introduction**

The same procedure used to identify and subsequently type the baseline river water bodies (catchment area $> 10 \text{ km}^2$)¹ and lake water bodies (surface area $> 0.5 \text{ km}^2$)² has been extrapolated to include small water bodies. An additional size category of $< 10 \text{ km}^2$ for river water bodies and two additional categories of $< 10 \text{ ha}$ and $10 - 50 \text{ ha}$ for lake water bodies has been included within the baseline water body datasets. The small water body datasets have been typed in accordance with System A, as defined in Annex II of the Water Framework Directive (WFD).

2. Rivers

Table 1 below lists the small river water body types generated (as illustrated in Map 1).

Table 1: Small water body types for rivers

Small River Water Bodies	
Type	Number
Type 37: lowland: $< 200 \text{ m}$, very small: $< 10 \text{ km}^2$, siliceous	58
Type 38: lowland: $< 200 \text{ m}$, very small: $< 10 \text{ km}^2$, calcareous	41
Type 39: lowland: $< 200 \text{ m}$, very small: $< 10 \text{ km}^2$, organic	3
Type 40: mid-altitude: $200 \text{ to } 800 \text{ m}$, very small: $< 10 \text{ km}^2$, siliceous	11
Type 41: mid-altitude: $200 \text{ to } 800 \text{ m}$, very small: $< 10 \text{ km}^2$, calcareous	9
Type 42: mid- altitude: $200 \text{ to } 800 \text{ m}$, very small: $< 10 \text{ km}^2$, organic	27
Total	149

The small river water bodies consist of:

- Small, but significant, drinking water sources as recommended in section 5 of the UKTAG Small Water Body Guidance³.
- River stretches identified or proposed by EHS Natural Heritage as supporting species or habitats of conservation interest (Special Protection Areas (SPA), Special Areas of Conservation (SAC), and Areas of Special Scientific Interest (ASSI)).

Further investigative work will need to be carried out on the coastal areas of Northern Ireland that have not been included in the initial river typology assessment, to ascertain whether some of these areas need to be identified as separate small water bodies.

¹ <http://www.ehsni.gov.uk/pubs/publications/RiverTypology.pdf>

² <http://www.ehsni.gov.uk/pubs/publications/LakeTypology.pdf>

³ [http://www.wfduk.org/tag_guidance/Article_05/Folder.2004-02-16.5420/TAG_2003_WP_3a_\(PR02\)](http://www.wfduk.org/tag_guidance/Article_05/Folder.2004-02-16.5420/TAG_2003_WP_3a_(PR02))

3. Lakes

Table 2 below lists the small lake water body types generated. The water bodies have been identified for the following reasons:

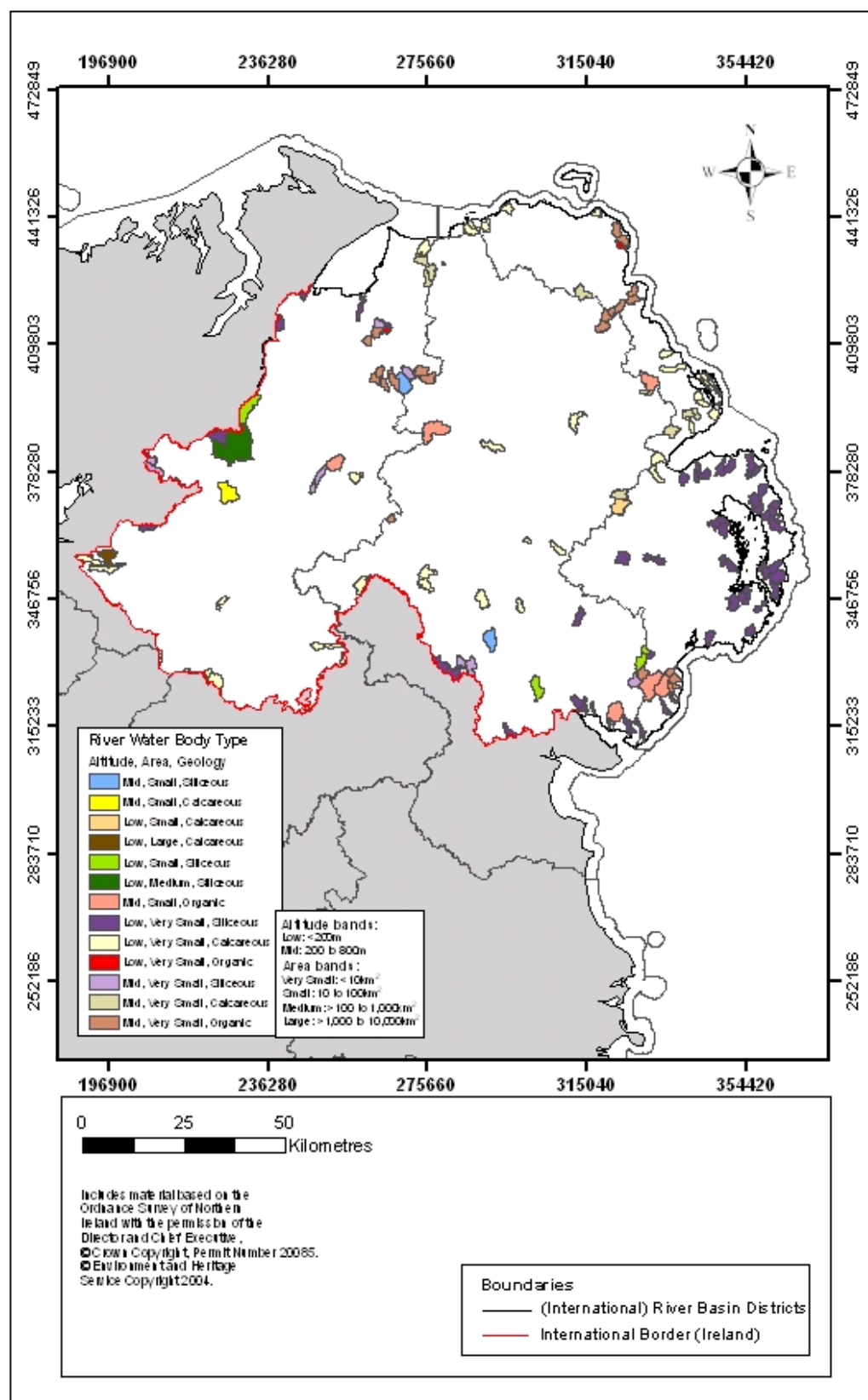
- Both environmental agencies in Ecoregion 17, the Environmental Protection Agency (EPA) and Environment and Heritage Service (EHS), have agreed that all lakes above 10 ha are significant units in ecological terms on the island of Ireland.
- Small lakes identified or proposed by EHS Natural Heritage as supporting species or habitats of conservation interest (Special Protection Areas (SPA), Special Areas of Conservation (SAC) and Areas of Special Scientific Interest (ASSI)).

Map 2 shows the position of small lake water bodies within Northern Ireland.

Table 2: Small water body types for lakes

Small Lake Water Bodies	
Type	Number
Type 1: <200 m, calcareous, non-peat, <10 ha	65
Type 2: <200 m, calcareous, peat, <10 ha	33
Type 3: <200 m, calcareous, non-peat, 10 – 50 ha	61
Type 4: <200 m, calcareous, peat, 10 – 50 ha	2
Type 7: <200 m, siliceous, non-peat, <10 ha	12
Type 8: <200 m, siliceous, peat, <10 ha	14
Type 9: <200 m, siliceous, non-peat, 10 – 50 ha	42
Type 10: <200 m, siliceous, peat, 10 – 50 ha	4
Type 13: >200 m, calcareous, non-peat, <10 ha	18
Type 14: >200 m, calcareous, peat, <10 ha	37
Type 15: >200 m, calcareous, non-peat, 10 – 50 ha	6
Type 16: >200 m, calcareous, peat, 10 – 50 ha	2
Type 20: >200 m, siliceous, peat, <10 ha	14
Type 21: >200 m, siliceous, non-peat, 10 – 50 ha	3
Type 22: >200 m, siliceous, peat, 10 – 50 ha	2
Total	315

Map 1: Small River Water Bodies



Map 2: Small Lake Water Bodies

