

# E-PRTR and LCP Integrated data reporting

## Access template

Version 1.0 – 12/06/2019



Cover design: EEA

Cover photo: Jorge Franganillo, Creative Commons Attribution 2.0 Generic (<https://goo.gl/rqHYk6>)

Layout: EEA

## Acknowledgments

This manual for the use of the E-PRTR & LCP Integrated Reporting's Access template was prepared by the European Environment Agency (EEA) in cooperation with the [European Topic Centre on Air pollution, Transport, Noise and Industrial Pollution \(ETC/ATNI\)](#).

Should you have any need of clarification, please contact [industrial.emissions@eea.europa.eu](mailto:industrial.emissions@eea.europa.eu).

## Version control

Version ID	Date	Description
1.0	12 June 2019	Final version for release.

# Contents

<b>Acknowledgments</b> .....	<b>2</b>
<b>Version control</b> .....	<b>2</b>
<b>Contents</b> .....	<b>3</b>
<b>1 Introduction</b> .....	<b>4</b>
1.1 Purpose of this document .....	4
1.2 Resources for the conversion service .....	4
<b>2 Use of the conversion service</b> .....	<b>5</b>
2.1 The conversion service explained .....	5
2.2 Structure of the template .....	6
2.3 Key aspects when populating the template .....	9
2.4 Means to populate the template.....	10
2.5 Description of the data tables and fields .....	10

# 1 Introduction

## 1.1 Purpose of this document

Reporting countries will make submissions under the E-PRTR & LCP Integrated Reporting using eXtensible Markup Language (XML) files that are compliant with the XML schema definition (XSD) for the Thematic data model. Such files will be submitted to the EEA Central Data Repository (CDR) using existing EEA reporting infrastructure. This process is described in the E-PRTR and LCP Integrated Reporting Manual for Reporters<sup>1</sup>.

There are two mechanisms to prepare XML files:

1. **Direct XML route:** Countries generate their own XML files that must comply with the requirements of the XSD and be validated against XML syntax. This option will typically be used by reporting countries with a high degree of IT expertise and who are capable of mapping data fields in their data systems to the E-PRTR & LCP Integrated Reporting data model and of producing fully compliant XML files.
2. **Microsoft Access route:** Countries populate a predefined Microsoft Access template that is then converted into a valid XML file by an EEA online conversion service. Many reporting countries may not have access to expert IT resources and may also be more comfortable populating Microsoft Access databases. This may well be the case for many thematic experts who will be more familiar with Microsoft Access than with XML. Therefore, to help ensure the success of the E-PRTR & LCP Integrated Reporting and the requisite data flow between reporting countries and the EEA, the EEA is committed to providing this alternative XML-generation route that will help reporting countries with limited IT resources.

Once the XML file has been generated by one of these two routes the reporting country will then submit it to the E-PRTR & LCP Integrated Reporting via the CDR.

This document offers guidance in understanding the structure of the Access template that can be populated by reporting countries to then produce compliant XML files using the EEA's conversion service.

## 1.2 Resources for the conversion service

The resources provided to use the Access template route are:

- The Access template, which can be downloaded from the E-PRTR & LCP Integrated Reporting project website;
- The web-based conversion service, which is accessible via the E-PRTR & LCP Integrated Reporting project website.

It is assumed the user will already understand the E-PRTR & LCP Integrated Reporting data model. Reference should be made to E-PRTR & LCP Integrated Reporting Data Model Documentation or to the E-PRTR & LCP Integrated Reporting Manual for Reporters for details on the data model structure and requirements for each attribute.

---

<sup>1</sup> Please refer to the E-PRTR & LCP Integrated Reporting project website for all referenced documentation: [https://cdrtest.eionet.europa.eu/help/eprtr\\_lcp](https://cdrtest.eionet.europa.eu/help/eprtr_lcp)

## **2 Use of the conversion service**

### **2.1 The conversion service explained**

The EEA developed and maintains an online conversion service. Users can populate an Access file with data from their systems, upload this Access file to an EEA server, and the server returns a URL (by email) where the converted XML file can then be downloaded.

The conversion service is programmed using FME, a software that allows for a flexible and visual transformation of data formats. Users do not need a software license as the EEA uses FME Server, a package that allows running of the processes via a web interface.

Countries can however re-use and adapt the FME process which is why the full file with the conversion process is posted in the E-PRTR & LCP Integrated Reporting project website (see Section 1.2).

Figure 1 includes a screenshot of the conversion service where the Access template and the web-form to upload and execute the conversion are available.

**Figure 1 Screenshot of the E-PRTR & LCP Integrated Reporting conversion service**

**Access to XML - E-PRTR and LCP integrated data reporting conversion tool**

---

**About the tool**

Version of the tool: [Version 0.2](#)

Code of the FME process

The process that runs behind this website is also available for reuse. For that to be possible, the software Feature Manipulation Engine (FME) is necessary.

- Current version of the FME process: [download here](#)

---

**Access template**

For those countries that wish to, the EEA will enable a conversion service. Countries will be provided with a Microsoft Access database 'template' which, once populated, will be converted into an XML file compliant with the GML Schema. (This is supported by so-called FME-processes).

- Microsoft Access template: [download here](#)
- Microsoft Access template, populated example: [download here](#)

---

**Conversion tool**

The following tool converts a populated Access file to XML format. The output XML file has to then be uploaded to the relevant CDR envelope.

Form for the conversion:

---

No file chosen

---

File list:

---

E-mail address:

**Instructions:**

- 1) Choose a file (*the button displays different messages depending on the browser e.g. "Choose File" or "Browse..."*)
- 2) Select the MS Access file that you want to convert
- 3) Click "Upload File" to upload the file (*this action may take several minutes depending on the file size*)
- 4) Provide a valid e-mail address and click "Execute"
- 5) When the conversion is ready, the system will send you an e-mail, with the link to the converted file
- 6) Click in the link and download the file
- 7) Add the XML file to the relevant envelope in CDR.

**Note:**

EEA Reportnet works best with Google Chrome (recommended) or Mozilla Firefox.

The use of Internet Explorer is not recommended.

## 2.2 Structure of the template

The Access template mirrors, to a large extent, the Unified Modelling Language (UML) data model of the E-PRTR & LCP Integrated Reporting. The template is intended to be a bridge between reporting countries data systems and the E-PRTR & LCP Integrated Reporting data model. However, the constraints of Access lead to slight changes in the structure. Furthermore, the need to offer a flexible, user-friendly framework, means the template's design will not be fully optimised from an IT expert's point of view.

Two key principles governed the development of the template:

- Understandability and intuitiveness – The data structure should match the E-PRTR & LCP Integrated Reporting UML data model wherever possible and field names should either match attributes in the

E-PRTR & LCP Integrated Reporting data model directly or else be easily understood by a thematic expert.

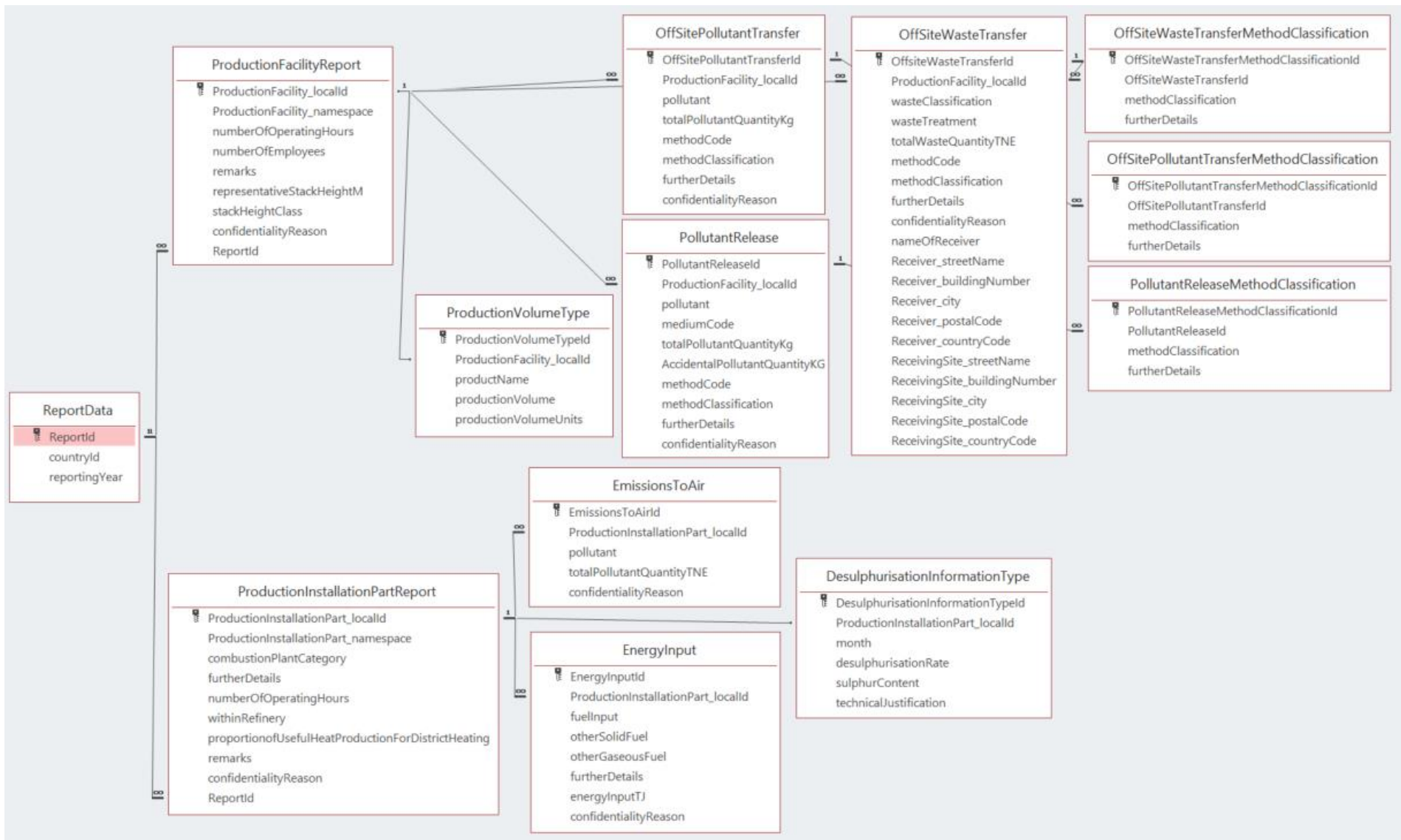
- A robust self-contained structure – It should be possible to easily populate the template from reporting countries databases with export queries that can be based on countries' own INSPIRE-compliant identifiers. Internal, auto-generated identifiers have been avoided where possible, they have only been included where a unique primary key is required for individual tables.

Figure 2 offers an overview of the template's structure. The template only contains the attributes that are included in the so-called streamlined view of the E-PRTR & LCP Integrated Reporting's data model (more details are available in the E-PRTR & LCP Integrated Reporting data model documentation). The attributes covered here constitute the E-PRTR & LCP Integrated Reporting and represent those with which reporting countries need to be concerned with reporting.

To reiterate, the overarching purpose for this Access template is to serve as an understandable stepping stone between reporting countries' databases and generating XML files that are compliant with the E-PRTR & LCP Integrated Reporting data model. Therefore, robustness and ease of understanding by a range of users (who will include thematic experts or others with limited IT experience) are paramount to the design of the template. Direct population of XML files that are compliant with the E-PRTR & LCP Integrated Reporting XSD by exporting directly from reporting countries' data systems remains another option for organisations with sufficient IT capabilities.

The template contains a hidden VersionControl table that refers to the version of the template the reporter is currently using. This version will need to be consistent with the latest available version as the FME conversion process will cross-reference this value and will fail if the latest version is not found. This is to ensure that reporters are using the correct template and to provide a simple informative error message should a reporter be using the wrong version. To unhide this table right-click on the 'All Access Objects' panel, select 'Navigation Options...' and tick 'Show Hidden Objects'.

Figure 2 Structure and relationships of the E-PRTR & LCP Integrated Reporting Access template





## 2.3 Key aspects when populating the template

There are certain aspects that need to be considered to successfully populate the Access template:

- The data need to refer **to a single reporting year**. If a country would like to report for several reporting years, independent Access files must be produced for each year and need to be converted separately.
- The conversion service **does not implement comprehensive quality assurance**; this only happens in the Central Data Repository (CDR) envelope where the converted XML file is reported. The structure of the Access template allows for some enforcement of the data model structures and formats, for example by requiring referential integrity (emission values must be linked to defined entities) and that mandatory fields are populated.
- When populating fields dependent on code lists, please ensure the values are **admitted values in the approved lists** in the [EEA Data Dictionary folder for the E-PRTR & LCP Integrated Reporting](#).
- INSPIRE v4.0 (the version to which the E-PRTR & LCP Integrated Reporting data model is referred to) requires codes to be reported as uniform resource locators (URLs). This means that all attributes populated using a code list need to provide a full valid URL to the EEA Data Dictionary code. For example:

The code list 'EPRTRPollutantCodeValue' is used to report the pollutant that is being released. In a case where an entity releases a quantity of CO<sub>2</sub>, the valid way to populate the relevant attribute would be:

<http://dd.eionet.europa.eu/vocabulary/EPRTRandLCP/EPRTRPollutantCodeValue/CO2>

- The tables that relate to the main feature types of the E-PRTR & LCP Integrated Reporting data model (i.e. facility and installation part) are linked with each other on the basis of the 'local identifier' of the INSPIRE identifier for the relevant feature type. These identifiers are used wherever possible as the link between the main tables (representing the feature types) and the ancillary tables (representing the data types). When the relationship between an attribute and the parent table has a multiplicity that is not 1:1, an ID specific to the Access template which is populated with an auto-number acts as the primary key (i.e. a unique identifier for each record in the table) in the background. Reporting countries should not need to track these auto-number generated values.
- Where multiplicity of zero or voidable is permitted for an attribute within the main feature types of the E-PRTR & LCP Integrated Reporting data model then the corresponding field should be left as blank (i.e. null) in the Access template. Where multiplicity of zero or voidable is permitted for an attribute that is linked to a data type in the E-PRTR & LCP Integrated Reporting data model then no record should be provided in the corresponding ancillary table in the Access template.
- It is recommended that users populate the highest-level tables first in sequence. Specifically, internal referential integrity warnings can be avoided by populating the tables in the following order:
  - ReportData
  - ProductionFacilityReport, followed by its ancillary tables; these ancillary tables can be filled out in any order.
  - ProductionInstallationPartReport, followed by its ancillary tables.

- The methodClassification attribute occurs in the main release and transfer tables, however in order to accommodate [0..\*] multiplicity for reporting on method classification, three ancillary tables have been provided:
  - PollutantReleaseMethodClassification
  - OffsitePollutantTransferMethodClassification
  - OffsiteWasteTransferMethodClassification

However, it is not expected that these tables will be required very often. In cases where only one methodClassification applies, the attribute in the main table should be populated. In cases where multiple methodClassifications apply, the methodClassification attribute in the main release or transfer table should be populated and then subsequent classifications should be provided in the separate method classification tables. Reporters should take care not to provide any duplicate classification values between the tables.

## 2.4 Means to populate the template

Countries are expected to develop their own means to populate the Microsoft Access template, e.g. using Access queries and macros. As all reporting countries operate with a different data storage mechanism, the EEA is not in the position to produce a populating mechanism that fits all circumstances.

The EEA offers, however, assistance to clarify further with IT experts in the reporting countries on the possible ways of populating the template, the mapping of the Access template structure with the XML schema tags, and any other support that may be needed. Should you need such assistance, please contact the EEA staff via the email listed in the “Acknowledgements” section of this document.

## 2.5 Description of the data tables and fields

This section describes the data tables and fields of the Access template and how these relate to the E-PRTR & LCP Integrated Reporting data model feature types, data types and attributes.

### **ReportData**

This table is analogous to the ReportData feature type in the E-PRTR & LCP Integrated Reporting data model.

- **ReportId** – Internal ID to the Access template which is populated with an auto-number. Since there should only be one record in the ReportData table the value of this field should be expected to be 1.
- **countryId** – Correlates directly to this attribute in the E-PRTR & LCP Integrated Reporting data model.
- **reportingYear** – Correlates directly to this attribute in the E-PRTR & LCP Integrated Reporting data model.

### **ProductionFacilityReport**

This table is analogous to the ProductionFacilityReport feature type in the E-PRTR & LCP Integrated Reporting data model.

- **ProductionFacility\_localId** – This is the first of two components that make up the INSPIRE identifier for the production facility. A comprehensive set of these identifiers should have been defined in the submission of the EU Registry on Industrial Sites. Identifiers in the submission of the E-PRTR & LCP Integrated Reporting dataset must be consistent with those reported under the EU Registry.

- **ProductionFacility\_namespace** – This is the second of two components that make up the INSPIRE identifier for the production site and should identify the data source. As with the localId, this should have been defined under the EU Registry and must remain consistent.
- **numberOfOperatingHours** - Correlates directly to this attribute in the E-PRTR & LCP Integrated Reporting data model.
- **numberOfEmployees** - Correlates directly to this attribute in the E-PRTR & LCP Integrated Reporting data model.
- **remarks** – An optional attribute that allows reporting countries to provide any additional information about the thematic data for a facility.
- **representativeStackHeightM** - Correlates directly to this attribute in the E-PRTR & LCP Integrated Reporting data model.
- **stackHeightClass** – This field is populated with a valid URL for the relevant value in the code list 'StackHeightClassValue' in the EEA Data Dictionary folder for the E-PRTR & LCP Integrated Reporting.
- **confidentialityReason** - This field is populated with a valid URL for the relevant value in the code list 'ReasonValue' in the EEA Data Dictionary folder for the E-PRTR & LCP Integrated Reporting.
- **ReportID** – Used to link to the parent ReportData table. Since there should only be one record in the ReportData table it is expected that all values for this field would be 1.

#### **ProductionFacilityReport Ancillary Tables:**

##### **ProductionVolumeType**

This table is analogous to the ProductionVolumeType data type in the E-PRTR & LCP Integrated Reporting data model.

- **ProductionVolumeTypeid** – There is a [0..\*] multiplicity between the parent ProductionFacility and this table since this attribute is optional and a facility can also have multiple products. Therefore, this ID (which is internal to the Access template) acts as the primary key for this table. This field is populated with an auto-number.
- **ProductionFacility\_localId** – INSPIRE compliant identifier used to link to the ProductionFacilityReport table.
- **productName** - Correlates directly to this attribute in the E-PRTR & LCP Integrated Reporting data model.
- **productionVolume** - Correlates directly to this attribute in the E-PRTR & LCP Integrated Reporting data model.
- **productionVolumeUnits** - Correlates directly to this attribute in the E-PRTR & LCP Integrated Reporting data model.

##### **OffsitePollutantTransfer**

This table is analogous to the OffSitePollutantTransfer feature type in the E-PRTR & LCP Integrated Reporting data model.

- **OffsitePollutantTransferId** – There is a [0..\*] multiplicity between the parent ProductionFacility and this table since a facility can have more than one offsite transfer of pollutants. Therefore, this ID (which is internal to the Access template) acts as the primary key for this table. This field is populated with an auto-number.
- **ProductionFacility\_localId** – INSPIRE compliant identifier used to link to the ProductionFacilityReport table.

- **pollutant** - This field is populated with a valid URL for the relevant value in the code list 'EPRTROPollutantCodeValue' in the EEA Data Dictionary folder for the E-PRTR & LCP Integrated Reporting.
- **totalPollutantQuantityKg** - Correlates directly to this attribute in the E-PRTR & LCP Integrated Reporting data model. This attribute must be populated with a number.
- **methodCode** - This field is populated with a valid URL for the relevant value in the code list 'MethodCodeValue' in the EEA Data Dictionary folder for the E-PRTR & LCP Integrated Reporting.
- **methodClassification** - This field is populated with a valid URL for the relevant value in the code list 'MethodClassificationValue' in the EEA Data Dictionary folder for the E-PRTR & LCP Integrated Reporting.
- **furtherDetails** - Correlates directly to this attribute in the E-PRTR & LCP Integrated Reporting data model.
- **confidentialityReason** - This field is populated with a valid URL for the relevant value in the code list 'ReasonValue' in the EEA Data Dictionary folder for the E-PRTR & LCP Integrated Reporting.

### OffsitePollutantTransferMethodClassification

This table is to enable the reporting of multiple method classifications for a single reported offsite pollutant transfer.

- **OffsitePollutantTransferMethodClassificationId** – To allow the reporting of multiple method classifications under a single offsite pollutant transfer this table needs a separate attribute to be unique and act as primary key. Therefore, this ID (which is internal to the Access template) acts as the primary key for this table. This field is populated with an auto-number.
- **OffsitePollutantTransferId** – This ID (internal to the Access template) is used to link the method classification to the OffsitePollutantTransfer table.
- **methodClassification** - This field is populated with a valid URL for the relevant value in the code list 'MethodClassificationValue' in the EEA Data Dictionary folder for the E-PRTR & LCP Integrated Reporting. Duplicate values should not be reported between this table and the OffsitePollutantTransfer table for a single OffSitePollutantTransferId.
- **furtherDetails** - Correlates directly to this attribute in the E-PRTR & LCP Integrated Reporting data model.

### PollutantRelease

This table is analogous to the PollutantRelease feature type in the E-PRTR & LCP Integrated Reporting data model.

- **PollutantReleaseId** - There is a [0..\*] multiplicity between the parent ProductionFacility and this table since a facility can have more than one pollutant release. Therefore, this ID (which is internal to the Access template) acts as the primary key for this table. This field is populated with an auto-number.
- **ProductionFacility\_localId** – INSPIRE compliant identifier used to link to the ProductionFacilityReport table.
- **pollutant** - This field is populated with a valid URL for the relevant value in the code list 'EPRTROPollutantCodeValue' in the EEA Data Dictionary folder for the E-PRTR & LCP Integrated Reporting.

- **mediumCode** - This field is populated with a valid URL for the relevant value in the code list 'MediumCodeValue' in the EEA Data Dictionary folder for the E-PRTR & LCP Integrated Reporting.
- **totalPollutantQuantityKg** - Correlates directly to this attribute in the E-PRTR & LCP Integrated Reporting data model. This attribute must be populated with a number.
- **AccidentalPollutantQuantityKG** - Correlates directly to this attribute in the E-PRTR & LCP Integrated Reporting data model. This attribute must be populated with a number.
- **methodCode** - This field is populated with a valid URL for the relevant value in the code list 'MethodCodeValue' in the EEA Data Dictionary folder for the E-PRTR & LCP Integrated Reporting.
- **methodClassification** - This field is populated with a valid URL for the relevant value in the code list 'MethodClassificationValue' in the EEA Data Dictionary folder for the E-PRTR & LCP Integrated Reporting.
- **furtherDetails** - Correlates directly to this attribute in the E-PRTR & LCP Integrated Reporting data model.
- **confidentialityReason** - This field is populated with a valid URL for the relevant value in the code list 'ReasonValue' in the EEA Data Dictionary folder for the E-PRTR & LCP Integrated Reporting.

### **PollutantReleaseMethodClassification**

This table is to enable the reporting of multiple method classifications for a single reported pollutant release.

- **PollutantReleaseMethodClassificationId** – To allow the reporting of multiple method classifications under a single pollutant release this table needs a separate attribute to be unique and act as primary key. Therefore, this ID (which is internal to the Access template) acts as the primary key for this table. This field is populated with an auto-number.
- **PollutantReleaseld** – INSPIRE compliant identifier used to link to the PollutantRelease table.
- **methodClassification** - This field is populated with a valid URL for the relevant value in the code list 'MethodClassificationValue' in the EEA Data Dictionary folder for the E-PRTR & LCP Integrated Reporting. Duplicate values should not be reported between this table and the PollutantRelease table for a single PollutantReleaseld.
- **furtherDetails** - Correlates directly to this attribute in the E-PRTR & LCP Integrated Reporting data model.

### **OffsiteWasteTransfer**

This table is analogous to the OffSitePollutantTransfer feature type in the E-PRTR & LCP Integrated Reporting data model.

- **OffsiteWasteTransferId** - There is a [0..\*] multiplicity between the parent ProductionFacility and this table since a facility can have more than one offsite waste transfer. Therefore, this ID (which is internal to the Access template) acts as the primary key for this table. This field is populated with an auto-number.
- **ProductionFacility\_localId** – INSPIRE compliant identifier used to link to the ProductionFacilityReport table.
- **WasteClassification** - This field is populated with a valid URL for the relevant value in the code list 'WasteClassificationValue' in the EEA Data Dictionary folder for the E-PRTR & LCP Integrated Reporting.

- **wasteTreatment** - This field is populated with a valid URL for the relevant value in the code list 'WasteTreatmentValue' in the EEA Data Dictionary folder for the E-PRTR & LCP Integrated Reporting.
- **totalWasteQuantityTNE** - Correlates directly to this attribute in the E-PRTR & LCP Integrated Reporting data model. This attribute must be populated with a number.
- **methodCode** - This field is populated with a valid URL for the relevant value in the code list 'MethodCodeValue' in the EEA Data Dictionary folder for the E-PRTR & LCP Integrated Reporting
- **methodClassification** - This field is populated with a valid URL for the relevant value in the code list 'MethodClassificationValue' in the EEA Data Dictionary folder for the E-PRTR & LCP Integrated Reporting.
- **furtherDetails** - Correlates directly to this attribute in the E-PRTR & LCP Integrated Reporting data model.
- **confidentialityReason** - This field is populated with a valid URL for the relevant value in the code list 'ReasonValue' in the EEA Data Dictionary folder for the E-PRTR & LCP Integrated Reporting.
- **nameOfReceiver** - Correlates directly to this attribute in the E-PRTR & LCP Integrated Reporting data model.
- **Receiver\_streetName** - Correlates directly to this attribute in the E-PRTR & LCP Integrated Reporting data model.
- **Receiver\_buildingNumber** - Correlates directly to this attribute in the E-PRTR & LCP Integrated Reporting data model.
- **Receiver\_city** - Correlates directly to this attribute in the E-PRTR & LCP Integrated Reporting data model.
- **Receiver\_postalCode** - Correlates directly to this attribute in the E-PRTR & LCP Integrated Reporting data model.
- **Receiver\_countryCode** - This field is populated with a valid URL for the relevant value in the code list 'CountryCodeValue' in the EEA Data Dictionary folder for the E-PRTR & LCP Integrated Reporting.
- **ReceivingSite\_streetName** - Correlates directly to this attribute in the E-PRTR & LCP Integrated Reporting data model.
- **ReceivingSite\_buildingNumber** - Correlates directly to this attribute in the E-PRTR & LCP Integrated Reporting data model.
- **ReceivingSite\_city** - Correlates directly to this attribute in the E-PRTR & LCP Integrated Reporting data model.
- **ReceivingSite\_postalCode** - Correlates directly to this attribute in the E-PRTR & LCP Integrated Reporting data model.
- **ReceivingSite\_countryCode** - This field is populated with a valid URL for the relevant value in the code list 'CountryCodeValue' in the EEA Data Dictionary folder for the E-PRTR & LCP Integrated Reporting.

### **OffsiteWasteTransferMethodClassification**

This table is to enable the reporting of multiple method classifications for a single reported offsite waste transfer.

- **OffsiteWasteTransferMethodClassificationId** - To allow the reporting of multiple method classifications under a single offsite waster transfer this table needs a separate attribute to be unique and act as primary key. Therefore, this ID (which is internal to the Access template) acts as the primary key for this table. This field is populated with an auto-number.
- **OffsiteWasteTransferId** – INSPIRE compliant identifier used to link to the OffsiteWasteTransfer table.
- **methodClassification** - This field is populated with a valid URL for the relevant value in the code list 'MethodClassificationValue' in the EEA Data Dictionary folder for the E-PRTR & LCP Integrated Reporting. Duplicate values should not be reported between this table and the OffsiteWasteTransfer table for a single OffsiteWasteTransferId.
- **furtherDetails** - Correlates directly to this attribute in the E-PRTR & LCP Integrated Reporting data model.

### **ProductionInstallationPartReport**

This table is analogous to the ProductionInstallationPart feature type in the E-PRTR & LCP Integrated Reporting data model although various ancillary tables are used to hold some of the installation information.

- **ProductionInstallationPart\_localId** – This is the first of two components that make up the INSPIRE identifier for the production facility. A comprehensive set of these identifiers should have been defined in the submission of the EU Registry on Industrial Sites. Identifiers in the submission of the E-PRTR & LCP Integrated Reporting dataset must be consistent with those reported under the EU Registry.
- **ProductionInstallationPart\_namespace** – This is the second of two components that make up the INSPIRE identifier for the production site and should identify the data source. As with the localId, this should have been defined under the EU Registry and must remain consistent.
- **combustionPlantCategory** - This field is populated with a valid URL for the relevant value in the code list 'CombustionPlantCategoryValue' in the EEA Data Dictionary folder for the E-PRTR & LCP Integrated Reporting.
- **furtherDetails** - Correlates directly to this attribute in the E-PRTR & LCP Integrated Reporting data model.
- **numberOfOperatingHours** - Correlates directly to this attribute in the E-PRTR & LCP Integrated Reporting data model. This attribute must be populated with a number.
- **withinRefinery** - This is a Boolean data type, i.e. a tick box (TRUE when ticked) to identify whether the installation part is situated within a refinery site.
- **proportionOfUsefulHeatProductionForDistrictHeating** - Correlates directly to this attribute in the E-PRTR & LCP Integrated Reporting data model. This attribute must be populated with a number.
- **remarks**- Correlates directly to this attribute in the E-PRTR & LCP Integrated Reporting data model.
- **confidentialityReason** - This field is populated with a valid URL for the relevant value in the code list 'ReasonValue' in the EEA Data Dictionary folder for the E-PRTR & LCP Integrated Reporting.
- **ReportId** – Used to link to the parent ReportData table. Since there should only be one record in the ReportData table it is expected that all values for this field would be 1.

### **ProductionInstallationReport Ancillary Tables:**

#### **DesulphurisationInformationType**

- **DesulphurisationInformationTypeId** - There is a [0..12] multiplicity between the parent ProductionInstallationPart and this table since desulphurisation information must be provided for

each month, if available. Therefore, this ID (which is internal to the Access template) acts as the primary key for this table. This field is populated with an auto-number.

- **ProductionInstallationPart\_localId** - INSPIRE compliant identifier used to link to the ProductionInstallationPartReport table.
- **Month** - This field is populated with a valid URL for the relevant value in the code list 'MonthValue' in the EEA Data Dictionary folder for the E-PRTR & LCP Integrated Reporting.
- **desulphurisationRate** - Correlates directly to this attribute in the E-PRTR & LCP Integrated Reporting data model. This attribute must be populated with a number.
- **sulphurContent** - Correlates directly to this attribute in the E-PRTR & LCP Integrated Reporting data model. This attribute must be populated with a number.
- **technicalJustification** - Correlates directly to this attribute in the E-PRTR & LCP Integrated Reporting data model.

### EmissionsToAir

- **EmissionsToAirId** - There is a [0..\*] multiplicity between the parent ProductionInstallationPart and this table since each installation part must report emissions for the three key pollutants. Therefore, this ID (which is internal to the Access template) acts as the primary key for this table. This field is populated with an auto-number.
- **ProductionInstallationPart\_localId** - INSPIRE compliant identifier used to link to the ProductionInstallationPartReport table.
- **pollutant** - This field is populated with a valid URL for the relevant value in the code list 'LCPPollutantCodeValue' in the EEA Data Dictionary folder for the E-PRTR & LCP Integrated Reporting. This code list is restricted to 'DUST', 'NOX' and 'SO2'.
- **totalPollutantQuantityTNE** - Correlates directly to this attribute in the E-PRTR & LCP Integrated Reporting data model. This attribute must be populated with a number.
- **confidentialityReason** - This field is populated with a valid URL for the relevant value in the code list 'ReasonValue' in the EEA Data Dictionary folder for the E-PRTR & LCP Integrated Reporting.

### EnergyInput

- **EnergyInputId** - There is a [0..\*] multiplicity between the parent ProductionInstallationPart and this table since each installation part must report emissions for all 8 fuel types as a minimum. Therefore, this ID (which is internal to the Access template) acts as the primary key for this table. This field is populated with an auto-number.
- **ProductionInstallationPart\_localId** - INSPIRE compliant identifier used to link to the ProductionInstallationPartReport table
- **fuelInput** - This field is populated with a valid URL for the relevant value in the code list 'FuelInputValue' in the EEA Data Dictionary folder for the E-PRTR & LCP Integrated Reporting.
- **otherSolidFuel** - This field is populated with a valid URL for the relevant value in the code list 'OtherSolidFuelValue' in the EEA Data Dictionary folder for the E-PRTR & LCP Integrated Reporting.
- **otherGaseousFuel** - This field is populated with a valid URL for the relevant value in the code list 'OtherGaseousFuelValue' in the EEA Data Dictionary folder for the E-PRTR & LCP Integrated Reporting.
- **furtherDetails** - Correlates directly to this attribute in the E-PRTR & LCP Integrated Reporting data model.
- **energyInputTJ** - Correlates directly to this attribute in the E-PRTR & LCP Integrated Reporting data model. This attribute must be populated with a number.
- **confidentialityReason** - This field is populated with a valid URL for the relevant value in the code list 'ReasonValue' in the EEA Data Dictionary folder for the E-PRTR & LCP Integrated Reporting.