

# Guide to import the MSFD article 19.3 table into the current MSFD database

A short user guide to fulfill the obligations under Art. 19(3)

Version 1.0  
 March 2013

## Notice

This report was produced by *Atkins Danmark a/s* for *The European Commission* for the specific purpose of support for MSFD reporting.

This report may not be used by any person other than *The European Commission* without *The Commission's* express permission. In any event, Atkins accepts no liability for any costs, liabilities or losses arising as a result of the use of or reliance upon the contents of this report by any person other than *the European Commission*.

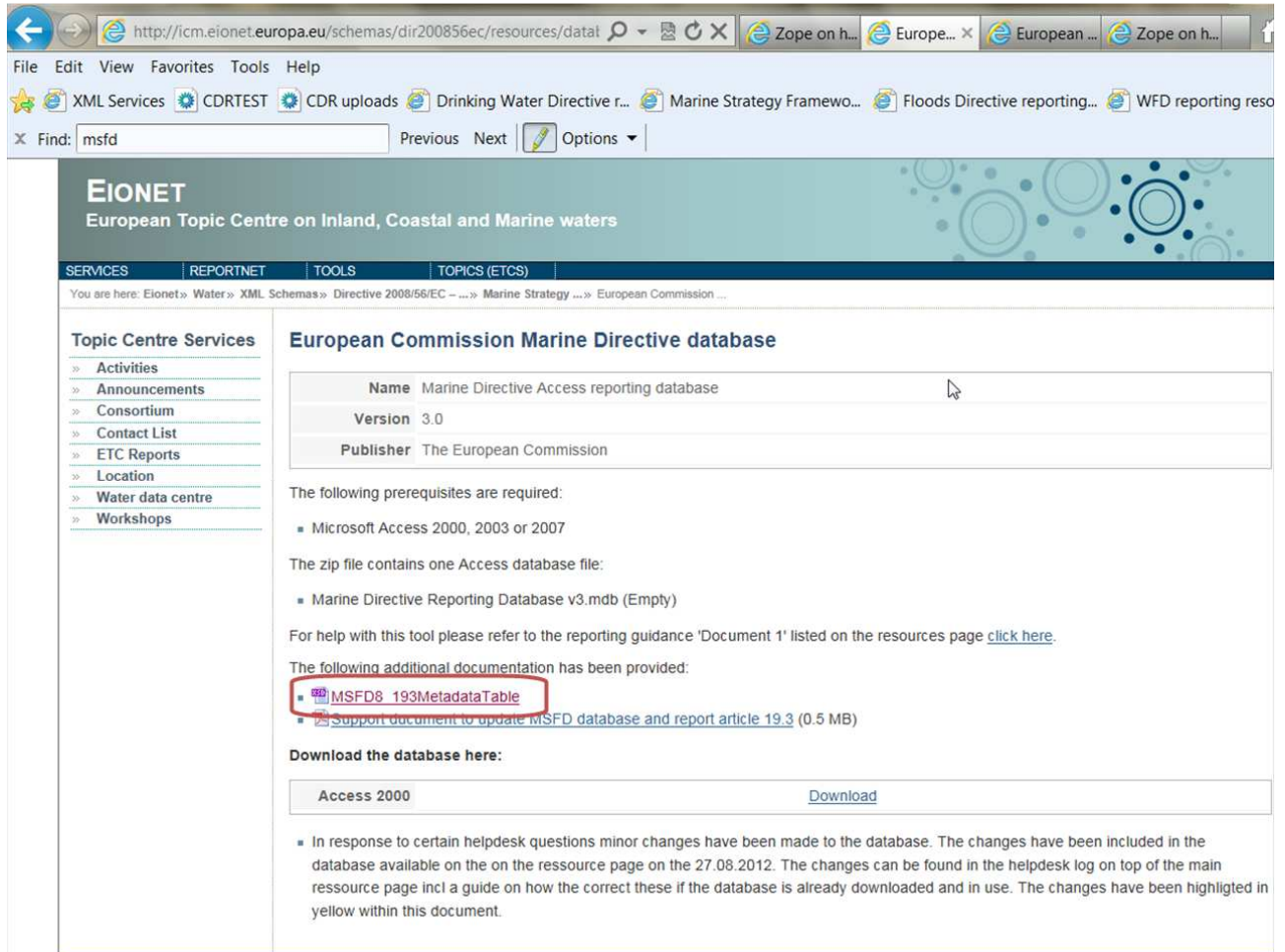
Atkins Limited

## Document History

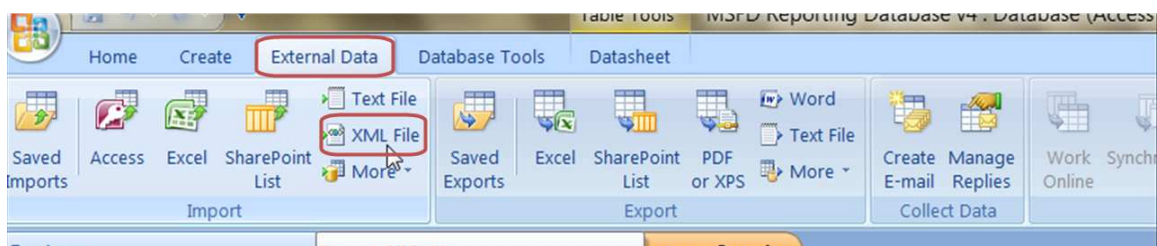
JOB NUMBER:1011112-1			DOCUMENT REF: MSFD8_193MetadatatableHelp v1.0			
1.0	1 <sup>st</sup> draft	Wolstrup	Maidens		Maidens	25.03.13

As agreed by Marine Directors in November 2012 and discussed at WG DIKE 18-19 March 2013, an add-on tool for the MSFD reporting Access database has been developed for use by those Member States who wish to fulfil their obligations under MSFD Article 19(3) through the 'metadata catalogue' option. This add-on tool to capture metadata on data (or datasets or data products) resulting from the MSFD Article 8 initial assessment.

Download the [MSFD8\\_193MetadataTable](#) from the resource page to a local folder



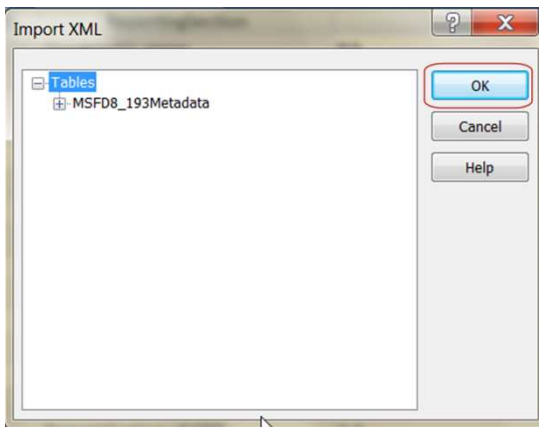
Open current Marine Directive Access reporting database and click here:



Locate the MSFD8\_193MetadataTable

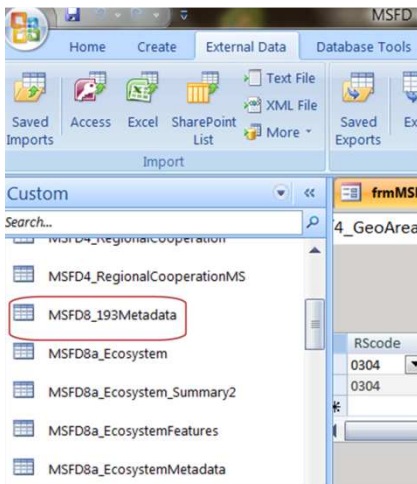


And press ok



And ok

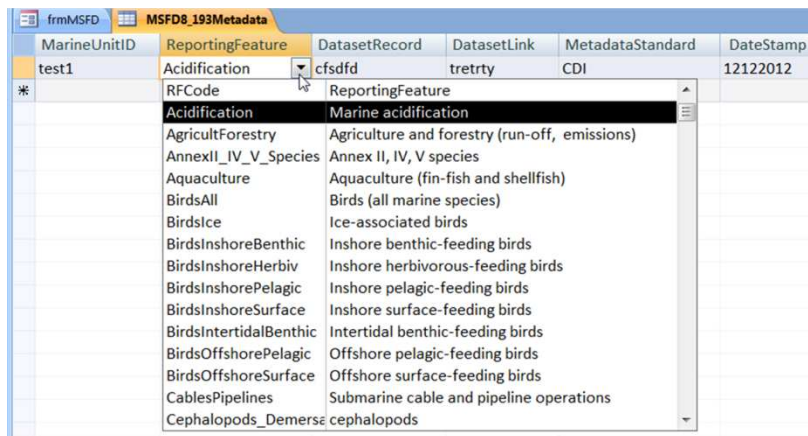
And this table will be imported into your current MSFD database



The table link to the MarineUnitID reported in the MSFD4\_GeographicalAreasID table

MarineUnitID	ReportingFeature	DatasetRecord	DatasetLink	MetadataStandard	DateStamp	Language
test1	Acidification	cfsdfd	tretrty	CDI	12122012	es
* test1	BAL					
test2	BAL					
test3	BAL					

And the ReportingFeature links to article 8 features from the Features\_Overview table



Then a set of links and additional information to the links needs to be inserted on the appropriate level

Dataset source(s)		Metadata standard	Date Stamp	Language
<b>METADATA DATASET RECORD</b> Provide a web link (URL) to each dataset metadata record (repeat row for each dataset). Links should be as specific as possible to avoid any ambiguity as to which data are being referred to. If web link is to a catalogue, provide a name/reference within the catalogue for the datasets.	<b>DATASET LINK</b> Only complete if METADATA DATASET RECORD does not contain link to dataset. Provide a web link (URL) to each dataset (repeat row for each dataset). Links should be as specific as possible to avoid any ambiguity as to which data are being referred to.	<b>Select ONE from List: metadata standard. Use most relevant (e.g. SDN CDI rather than ISO 19115)</b>	<b>Version date of METADATA RECORD (DDMMYY Y)</b>	<b>Give language of the metadata for the dataset(s) (use ISO 639-1 code)</b>

The conversion tool supports the table and converts the table information into a xml format to be uploaded under the appropriate obligation in Reportnet.